



# ALUMINUM MOUNTING SYSTEMS FOR PV PANELS



LASTING QUALITY  
LIKE SUN

[info@sunracks.net](mailto:info@sunracks.net)  
[www.sunracks.net](http://www.sunracks.net)



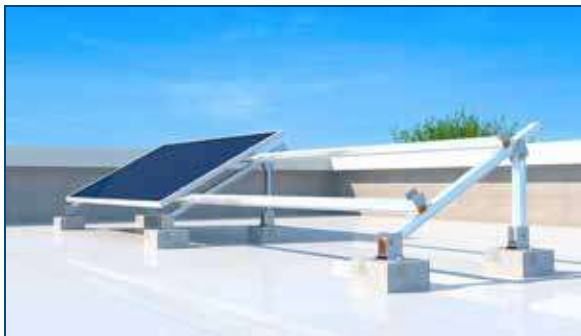
## Who we are ?

SUN RACKS is providing standard and optimized preassembly solutions for the photovoltaic mounting system based on fully aluminum material with high resistance alloy ( 6082-T6/6005-T6 /6063-T6 ) to fulfill all typologies needed for fixing all type of PV panels with all international specifications and standards.

## Strategy

- Reduce our carbon footprint.
- Remain flexible and responsive.
- Provide logistical support quickly and easily.
- Supply quality products conforming to international specs.
- Respond quickly to supply large solar projects on time and on specs.
- Remain cost competitive with fully imported alternatives with continues R&D.

# Products



Flat Roof



Ground Mounted



Industrial Roof



Special Application



# FLAT ROOF



## ATON



ATON FREE PANEL



1LS/T-4040



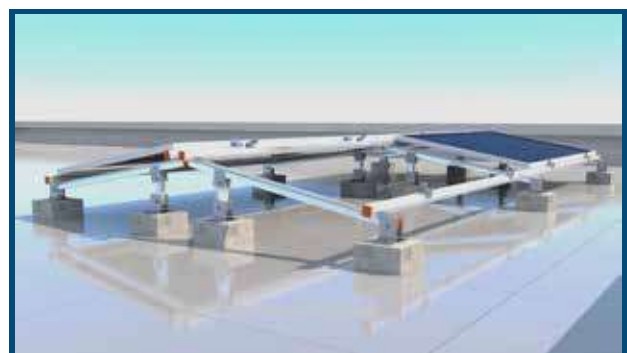
1P-4040



2P-4040



2LS/T-4040



LS/T/EW-40





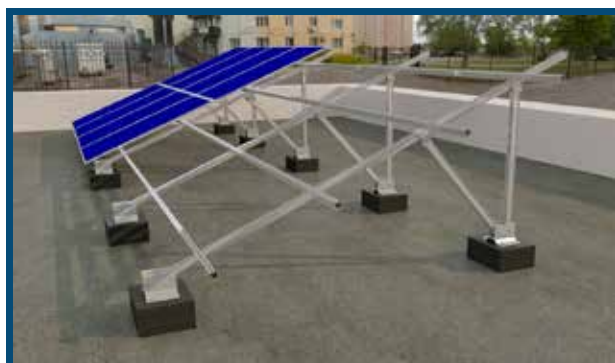
# FLAT ROOF



# HORUS



1P-4060



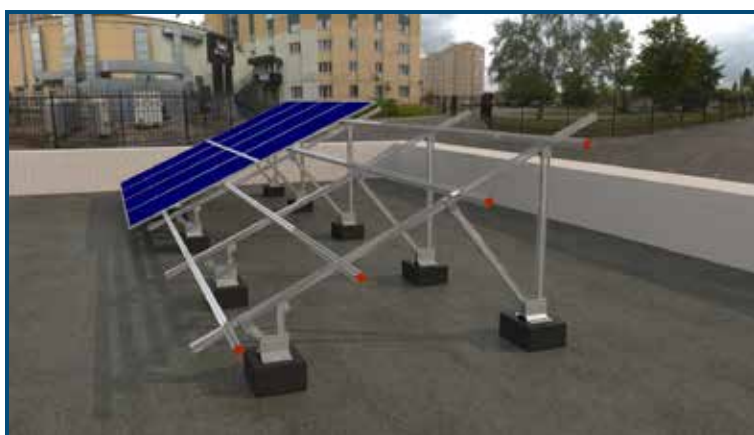
2P-4060



2LS-4060



LONG WING 4LS



LONG WING 2P

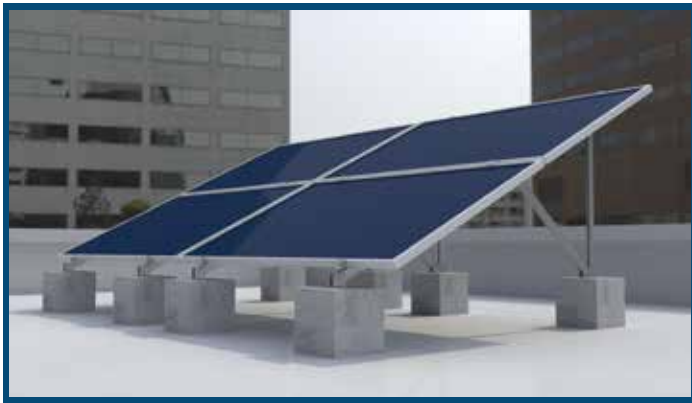




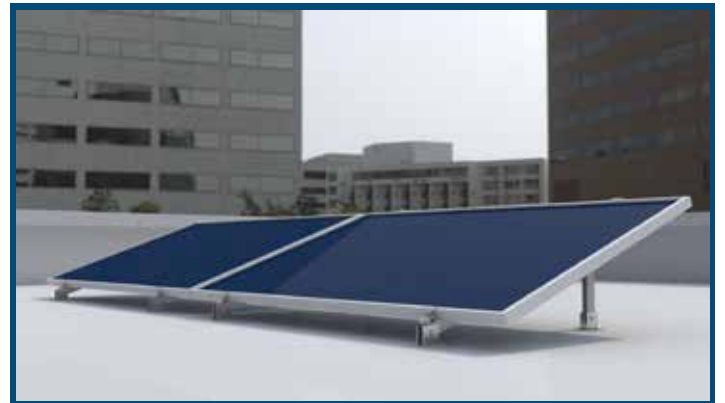
# FLAT ROOF



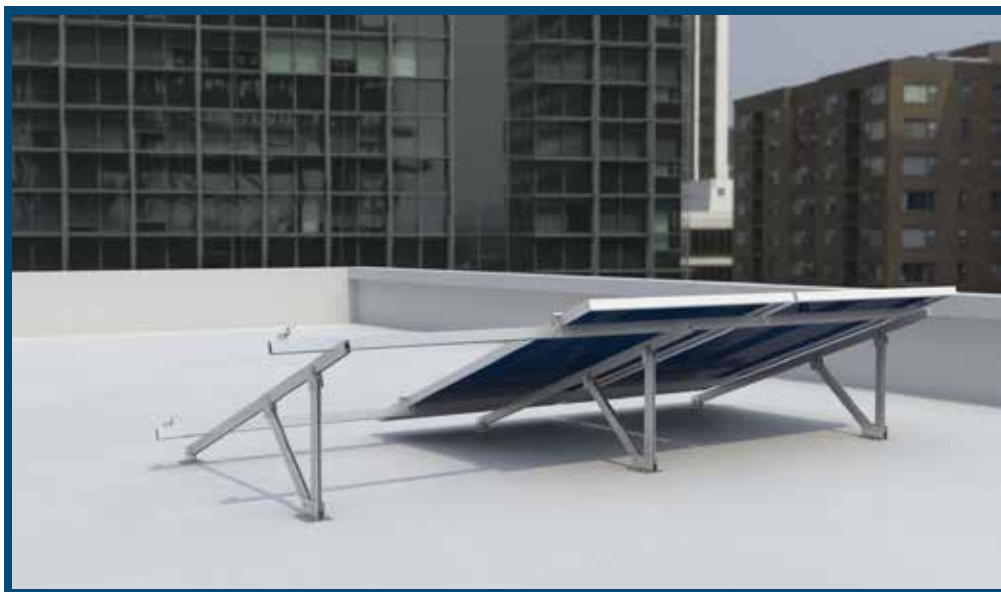
## NEFERTITI



NEFERTITI-2LS



NEFERTITI-1LS



NEFERTITI-1P

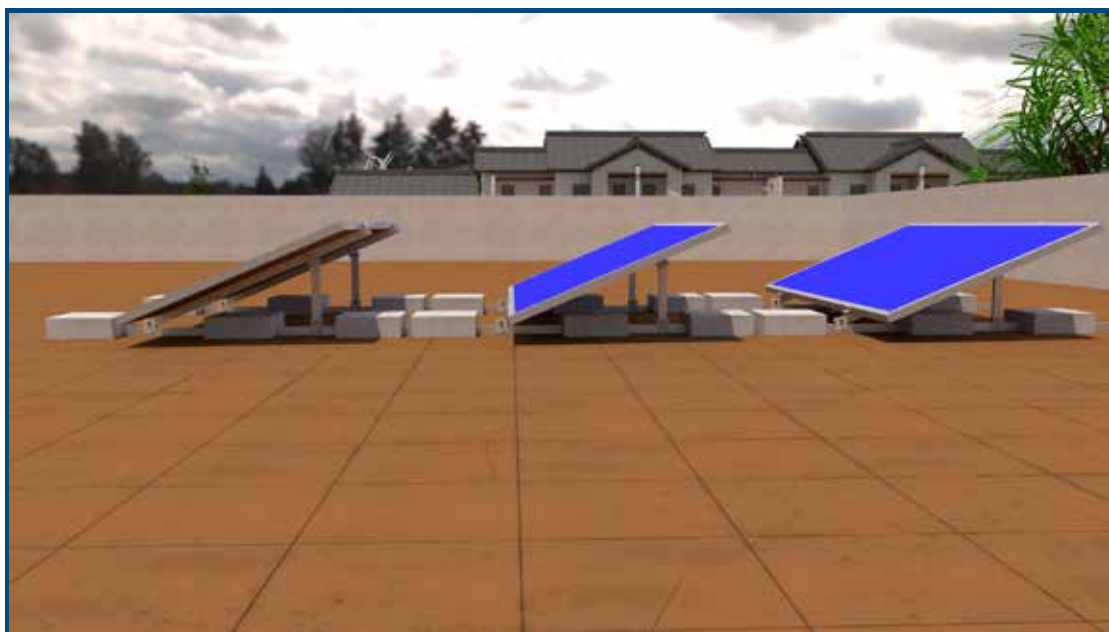
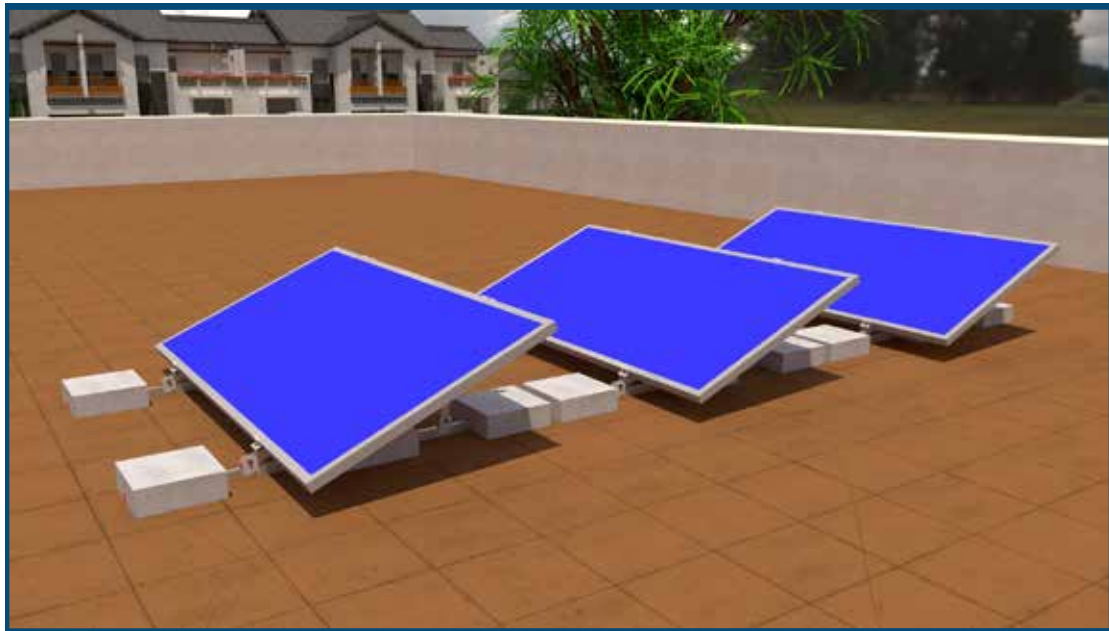




# FLAT ROOF



## GAZELLE





# GROUND MOUNTED



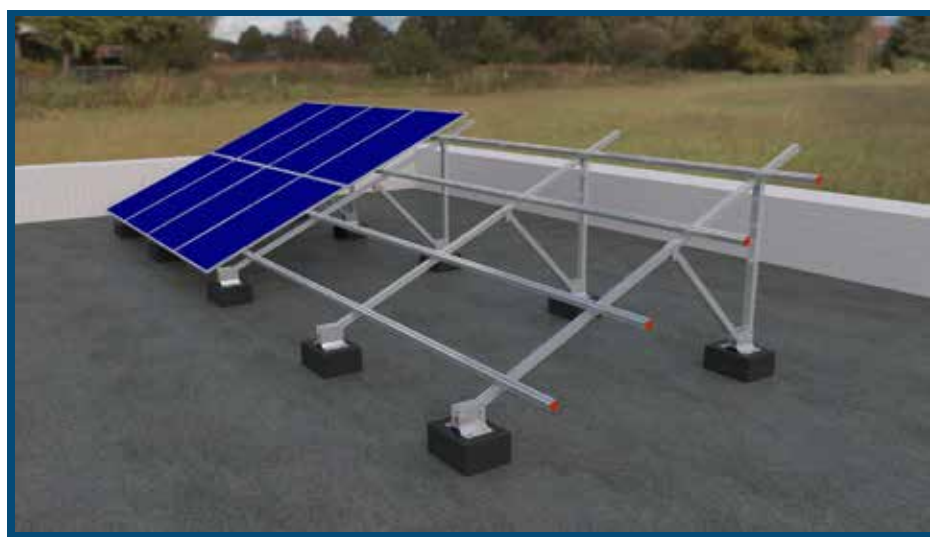
## ATON



ATON-2P 4040



## TIBA



TIBA-2P-4060





# GROUND MOUNTED



## HORUS



1P-4060



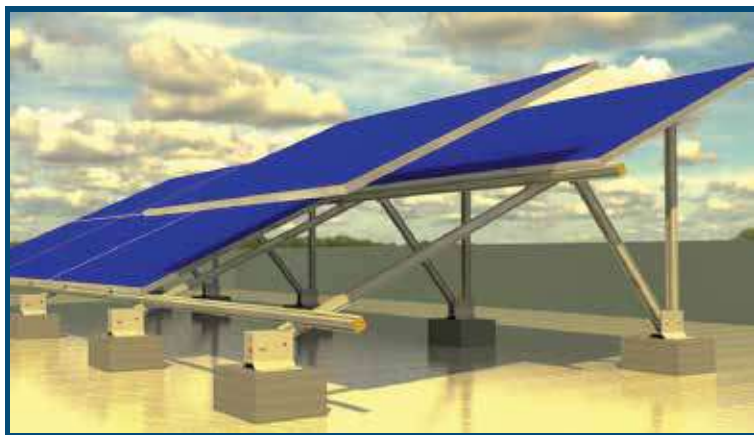
2P-4060



LONG WING 2P



LONG WING 4LS



2LS-4060



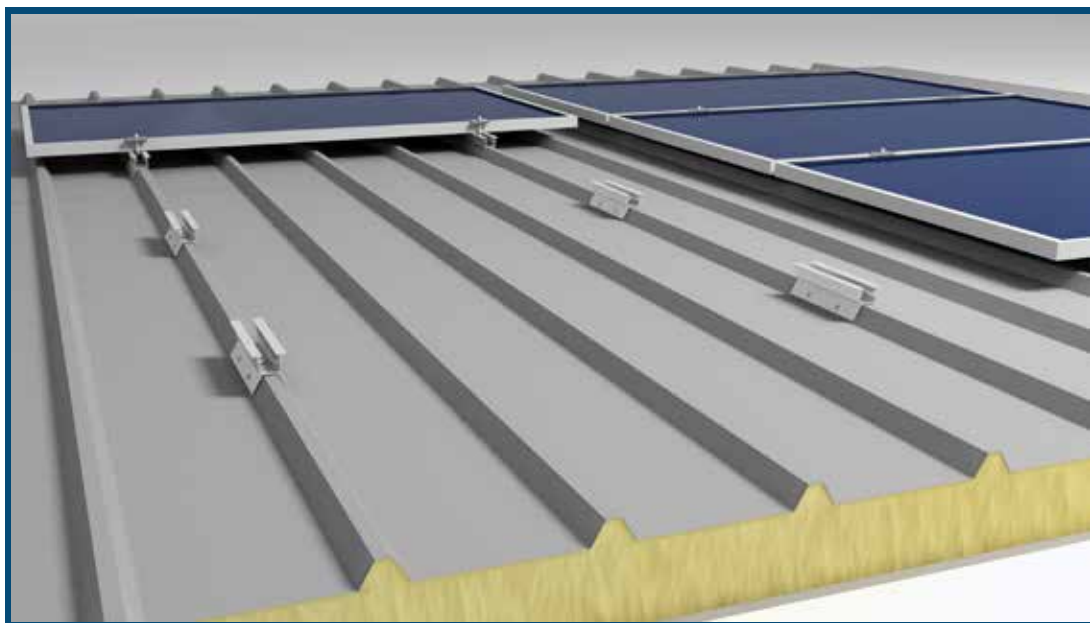
# INDUSTRIAL ROOF



## SOU



SOU LANDSCAPE



SOU ECO

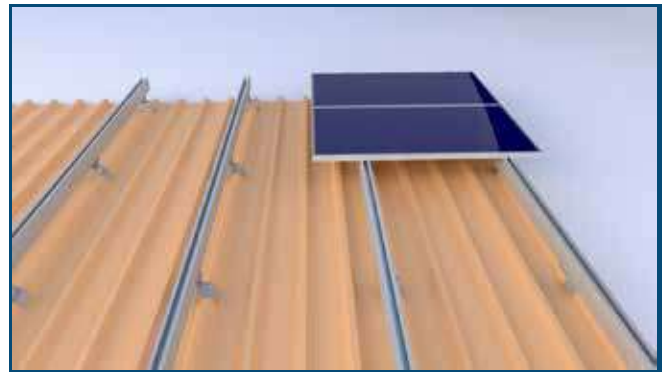




# INDUSTRIAL ROOF



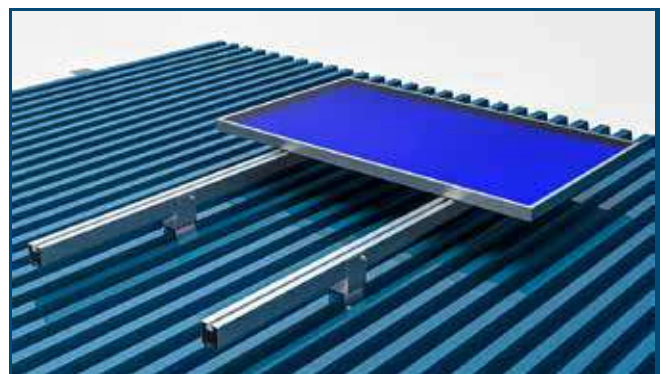
ZOSER LANDSCAPE



ZOSER STEPS



LS-SETI-4060

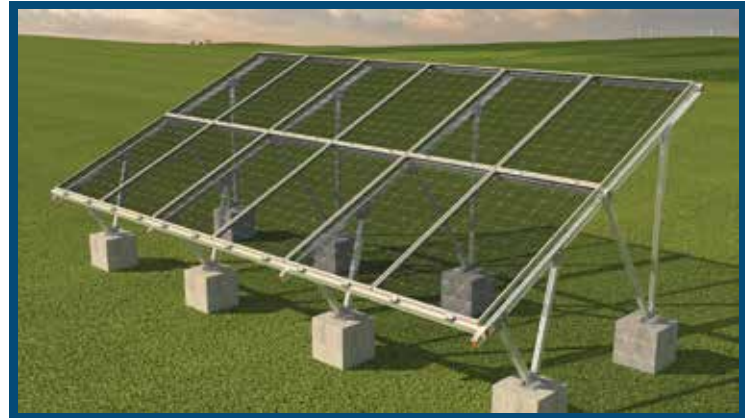


LS-SETI LIGHT

# SPECIAL APPLICATION



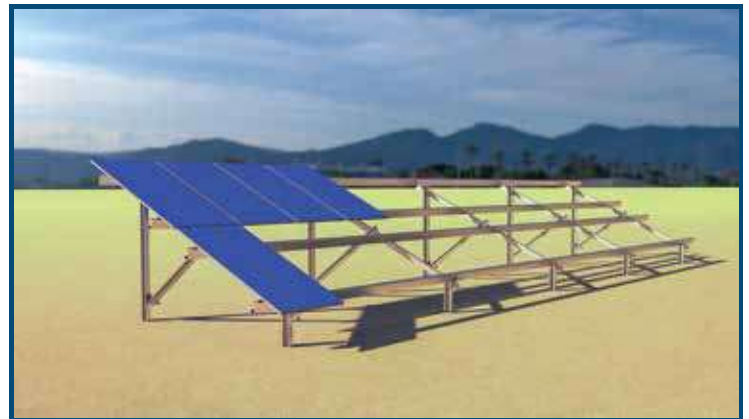
LONG WING 4LS BIO



LONG WING 2P BIO



 TILE ROOF - LOTUS



 ANUBIS 2P STEEL RAMMING



# SPECIAL APPLICATION



WALL MOUNTED SOLAR PANEL 1LS



WALL MOUNTED SOLAR PANEL 2LS



PERGOLA



 SOPDU-CAR PORT





## ATON FREE PANEL



### **DESCRIPTION:**

Rooftop Landscape single row without transom bars.

### **MATERIAL:**

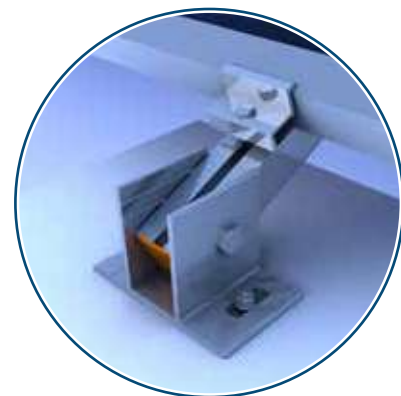
Profile 4x4 anodized aluminum alloy 6063-T6  
& stainless accessories A2-304.

### **FOR SEA SIDE:**

Anodized aluminum  
& stainless accessories A4-316.

### **ADVANTAGES**

- Light weight.
- Low cost.
- Simple installation.
- Low shading losses.





## ATON 1LS/T-4040



### **DESCRIPTION:**

Rooftop Landscape single row  
with two transom bars standard span  
between triangles 1.8 meter.

### **MATERIAL:**

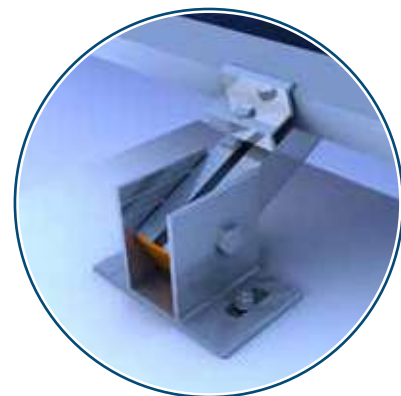
Profile 4x4 anodized aluminum alloy 6063-T6  
& stainless accessories A2-304.

### **FOR SEA SIDE:**

Anodized aluminum  
& stainless accessories A4-316.

### **ADVANTAGES**

- Light weight.
- Simple installation.
- Low shading losses.





## ATON 1P-4040



### **DESCRIPTION:**

Rooftop Landscape single row  
with two transom bars standard span  
between triangles 1.8 meter.

### **MATERIAL:**

Profile 4x4 anodized aluminum alloy 6063-T6  
& stainless accessories A2-304.

### **FOR SEA SIDE:**

Anodized aluminum  
& stainless accessories A4-316.

### **ADVANTAGES**

- Light weight.
- Low cost.
- Simple installation.
- Low shading losses.







## ATON 2P-4040



### **DESCRIPTION:**

Flat roof / Ground Mounted  
two portraits standard span  
between triangles 1.8 meter.

### **MATERIAL:**

Profile 4x4 anodized aluminum alloy 6063-T6  
& stainless accessories A2-304.

### **FOR SEA SIDE:**

Anodized aluminum  
& stainless accessories A4-316.

### **ADVANTAGES**

- Maximum energy yield.
- Low cost.
- Simple installation.





## ATON 2LS/T-4040



### **DESCRIPTION:**

Flat roof / Ground Mounted  
two Landscape standard span  
between triangles 1.8 meter.

### **MATERIAL:**

Profile 4x4 anodized aluminum alloy 6063-T6  
& stainless accessories A2-304.

### **FOR SEA SIDE:**

Anodized aluminum  
& stainless accessories A4-316.

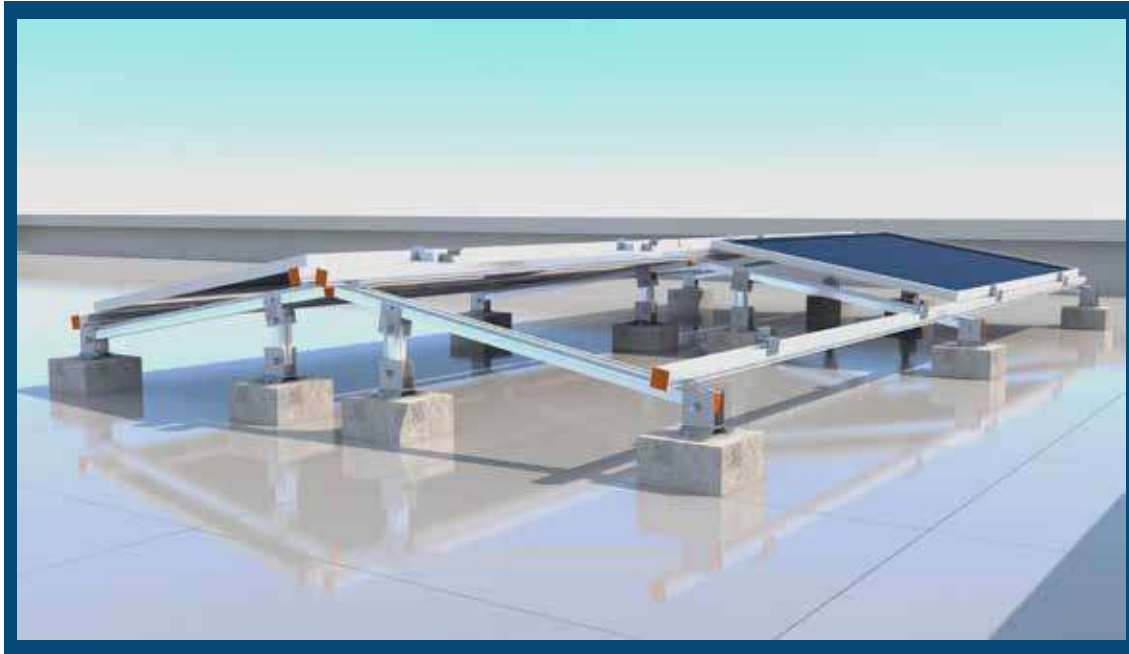
### **ADVANTAGES**

- Light weight.
- Simple installation.
- Low shading losses.





## ATON LS/T/EW-40



### **DESCRIPTION:**

Rooftop east-west single row with two transom bars standard span between triangles 1.8 meter.

### **MATERIAL:**

Profile 4x4 anodized aluminum alloy 6063-T6 & stainless accessories A2-304.

### **FOR SEA SIDE:**

Anodized aluminum & stainless accessories A4-316.

### **ADVANTAGES**

- Light weight.
- Simple installation.
- Low shading losses.
- Uniform energy distribution over the day.



# HORUS 1P-4060



## DESCRIPTION:

Flat roof / Ground Mounted  
one portrait standard span  
between triangles 2.5 meter.

## MATERIAL:

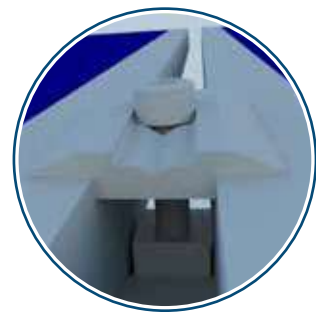
Profile 4x6 anodized aluminum alloy 6063-T6  
& stainless accessories A2-304.

## FOR SEA SIDE:

Anodized aluminum  
& stainless accessories A4-316.

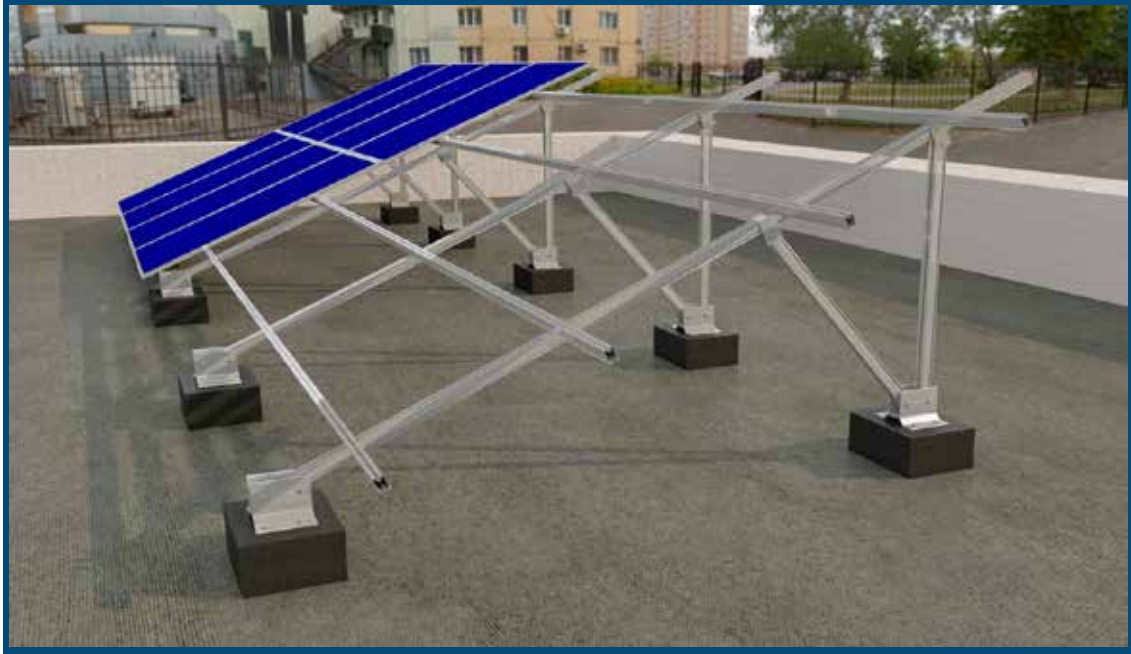
## ADVANTAGES

- Maximum energy yield.
- Low cost.
- Simple installation.





# HORUS 2P-4060



## DESCRIPTION:

Flat roof / Ground Mounted  
one portrait standard span  
between triangles 2.5 meter.

## MATERIAL:

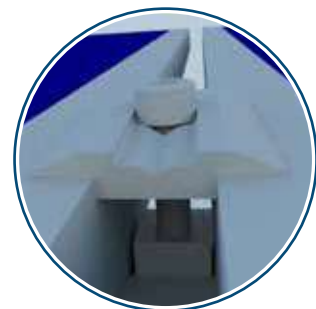
Profile 4x6 anodized aluminum alloy 6063-T6  
& stainless accessories A2-304.

## FOR SEA SIDE:

Anodized aluminum  
& stainless accessories A4-316.

## ADVANTAGES

- Maximum energy yield.
- Low cost.
- Simple installation.





# **HORUS -LONG WING-4LS**



## **DESCRIPTION:**

Ground Mounted 4 Landscape  
standard span between  
triangles 2.5 meter.

## **MATERIAL:**

Profile 4x6 anodized aluminum alloy 6063-T6  
& stainless accessories A2-304.

## **FOR SEA SIDE:**

Anodized aluminum  
& stainless accessories A4-316.

## **ADVANTAGES**

- Maximum energy yield.
- Simple installation.





# HORUS -LONG WING 2P



## DESCRIPTION:

Flat roof / Ground Mounted  
two portrait standard span  
between triangles 2.5 meter.

## MATERIAL:

Profile 4x6 anodized aluminum alloy 6063-T6  
& stainless accessories A2-304.

## FOR SEA SIDE:

Anodized aluminum  
& stainless accessories A4-316.

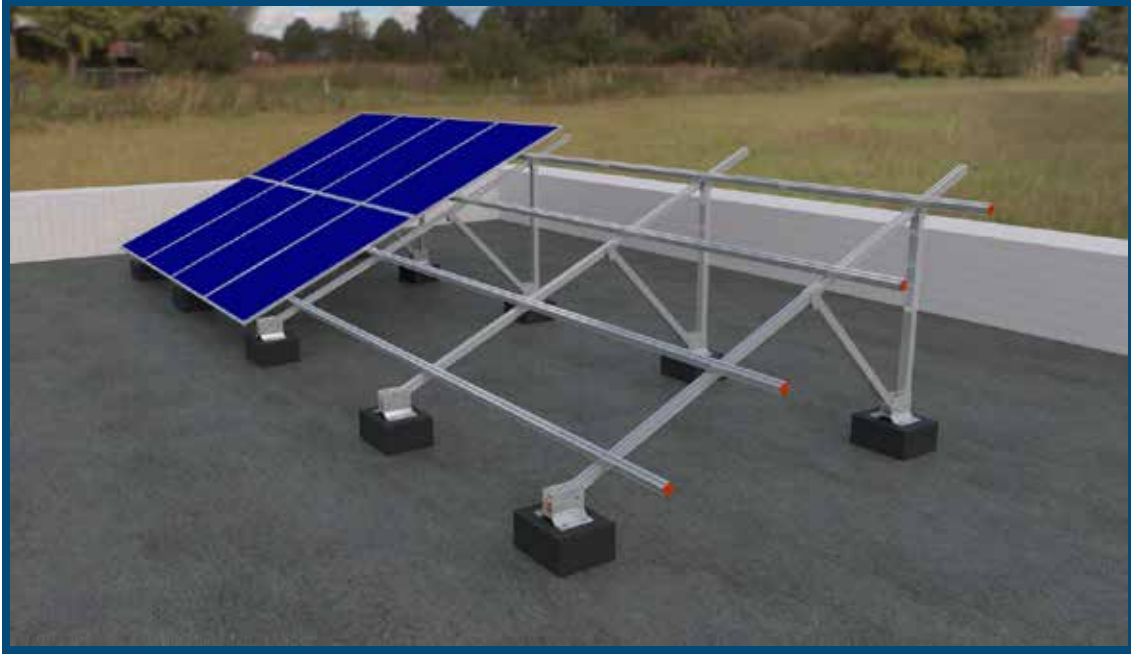
## ADVANTAGES

- Maximum energy yield.
- Low cost.
- Simple installation.
- Saving civil work.





**TIBA**



## DESCRIPTION:

Flat roof / Ground Mounted 2 portrait  
standard span between triangles 2.20 meter.

## MATERIAL:

Profile 4x5 anodized aluminum alloy 6063-T6  
& stainless accessories A2-304.

## FOR SEA SIDE:

Anodized aluminum  
& stainless accessories A4-316.

## ADVANTAGES

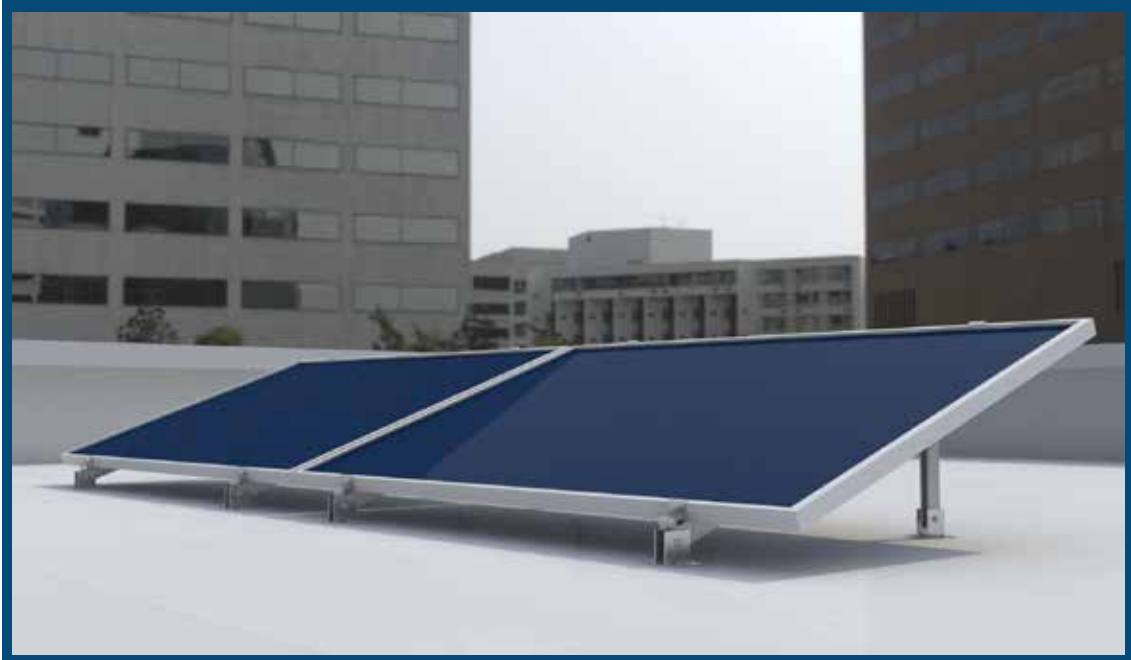
- Maximum energy yield.
- Low cost.
- Simple installation.







## NEFERTITI - 1LS



### DESCRIPTION:

Rooftop landscape single row without transom bars.

### MATERIAL:

Aluminum profile 2x4 , Alloy 6063 - T6 anodized  
& Stainless-steel accessories A2-304.

### FOR SEA SIDE:

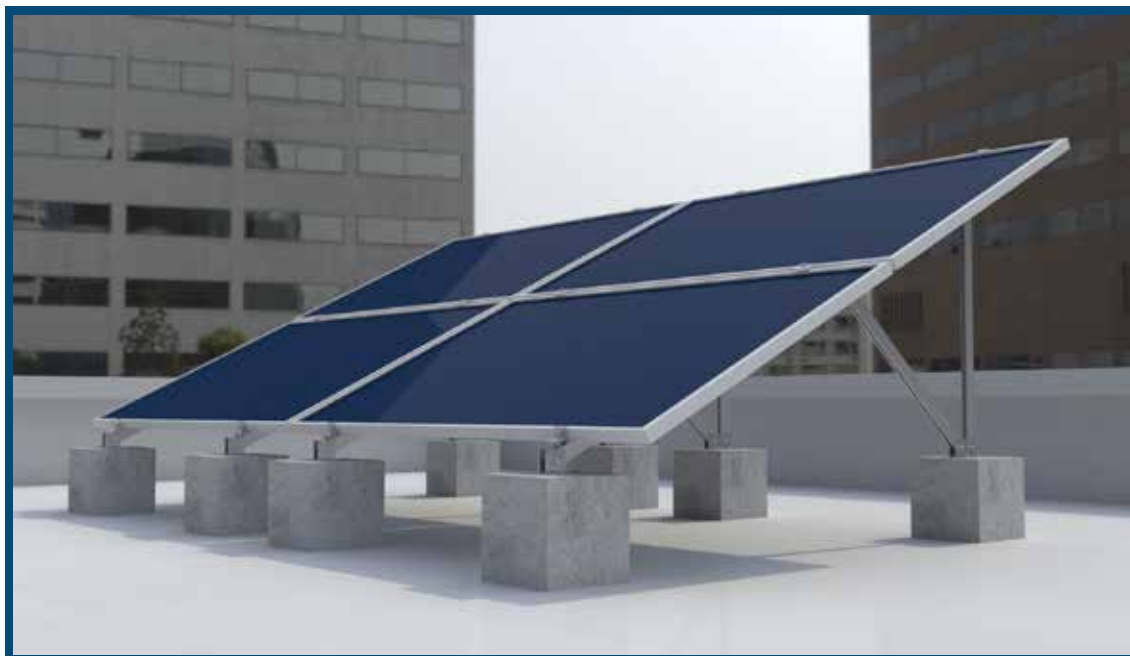
Anodized aluminum  
& stainless accessories A4-316.

### ADVANTAGES

- Light weight.
- Low cost.
- Simple installation.
- Low shading losses.



## NEFERTITI - 2LS



### DESCRIPTION:

Rooftop 2 landscape without transom bars.

### MATERIAL:

Aluminum profile 2x4 , Alloy 6063 - T6 anodized  
& Stainless-steel accessories A2-304.

### FOR SEA SIDE:

Anodized aluminum  
& stainless accessories A4-316.

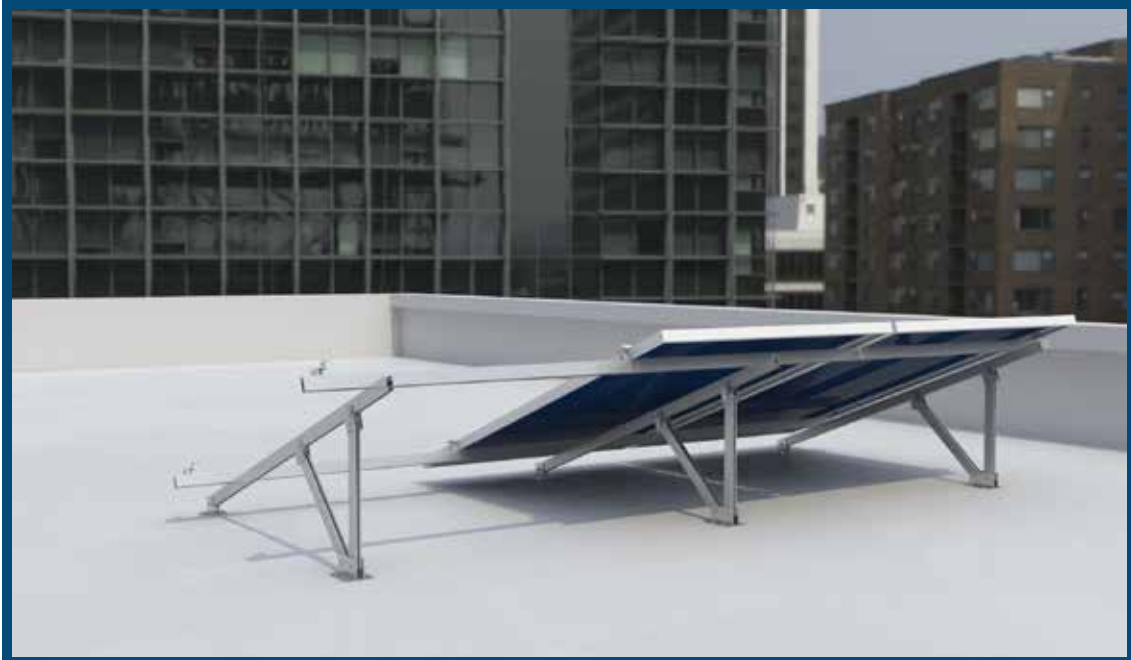
### ADVANTAGES

- Maximum energy yield.
- Low cost.
- Simple installation.
- Low shading losses.





## NEFERTITI - 1P



### DESCRIPTION:

Rooftop Landscape single row  
with two transom bars standard span  
between triangles 1.5 meter.

### MATERIAL:

Profile 2x4 anodized aluminum alloy 6063-T6  
& stainless accessories A2-304.

### FOR SEA SIDE:

Anodized aluminum  
& stainless accessories A4-316.

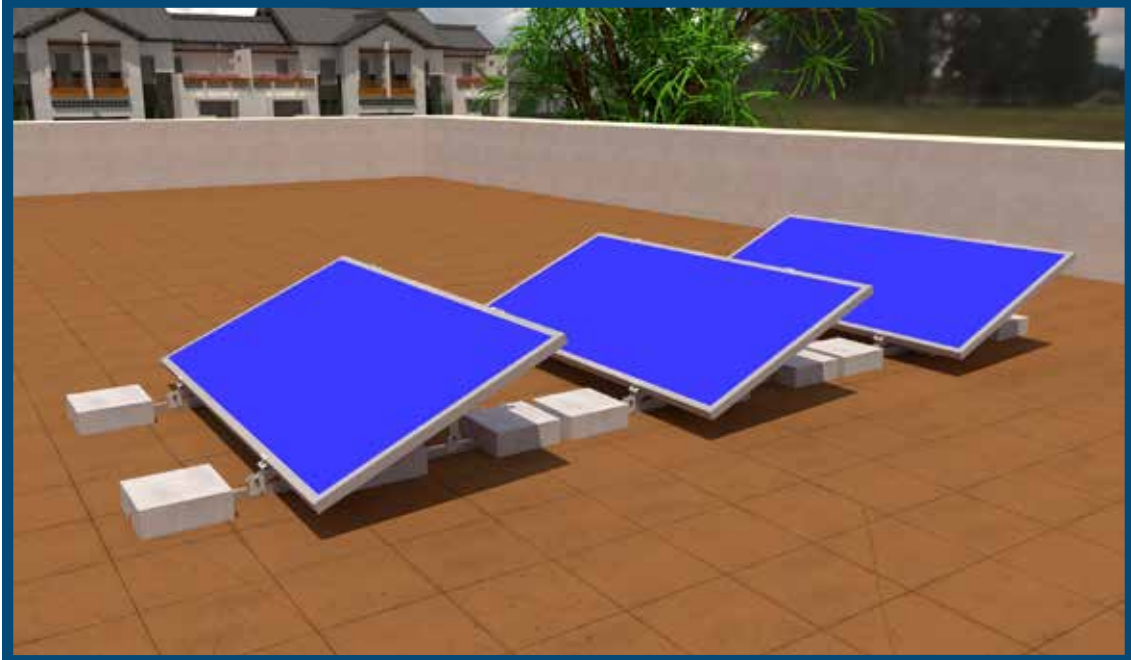
### ADVANTAGES

- Light weight.
- Low cost.
- Simple installation.
- Low shading losses.





## GAZELLE SELF BALLASTED



### DESCRIPTION:

Rooftop Self Ballasted landscape single row without transom bar.

### MATERIAL:

Aluminum Profile Alloy 6063-T6 anodized  
and Stainless-steel accessories A2-304.

### FOR SEA SIDE:

Anodized aluminum  
& stainless accessories A4-316.

### ADVANTAGES

- Light weight.
- Low cost.
- Simple installation.
- Low shading losses.
- No penetration needed.



# SOU LANDSCAPE



## DESCRIPTION:

Industrial roof Corrugated sheet landscape.

## MATERIAL:

profile 4x6, Alloy 6063-T6 & Stainless-steel accessories A2-304.

## FOR SEA SIDE:

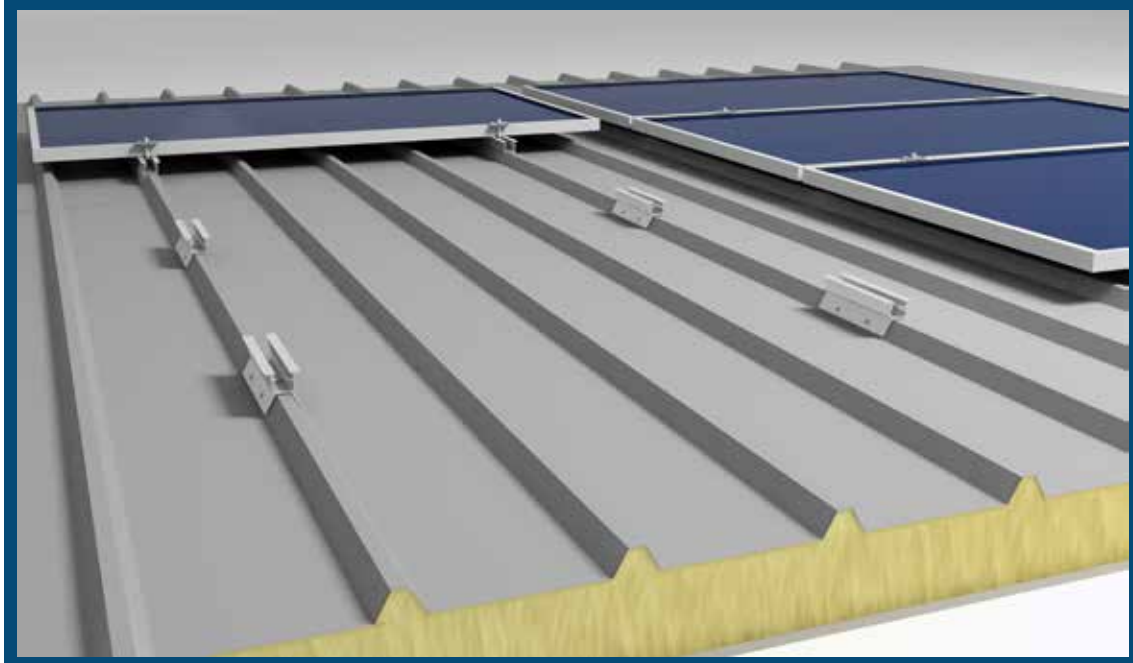
Anodized aluminum & stainless accessories A4-316.

## ADVANTAGES

- Light weight.
- Low cost.
- Simple installation.
- Suitable for standard Corrugated sheet dimension.



## SOU ECO



### DESCRIPTION:

Sandwich Panel Corrugated sheet landscape.

### MATERIAL:

Anodized Aluminum Alloy 6063-T6  
& Stainless-steel accessories A2-304.

### FOR SEA SIDE:

Anodized aluminum  
& stainless accessories A4-316.

### ADVANTAGES

- Light weight.
- Low cost.
- Simple installation.
- Suitable for standard Corrugated sheet dimension.





## DESCRIPTION:

Industrail roof corrugated sheet landscape.

## MATERIAL:

profile Alloy 6063-T6 & Stainless-steel  
accessories A2-304.

## FOR SEA SIDE:

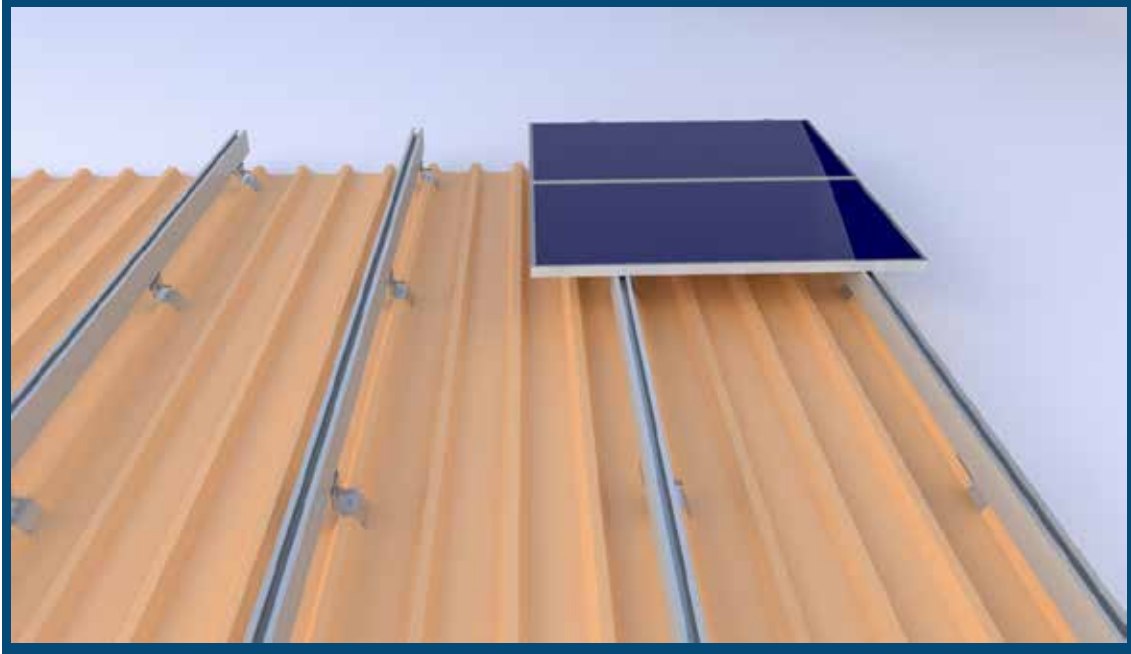
Anodized aluminum  
& stainless accessories A4-316.

## ADVANTAGES

- Maximum energy yield.
- Low cost.
- Simple installation.
- Suitable for standard Corrugated sheet dimension.



## ZOSER STEPS



### **DESCRIPTION:**

Industrial roof Corrugated sheet landscape.

### **MATERIAL:**

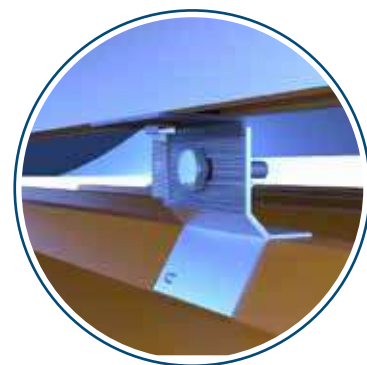
Aluminum Alloy anodized profile 6063-T6  
& Stainless-steel accessories A2-304.

### **FOR SEA SIDE:**

Anodized aluminum  
& stainless accessories A4-316.

### **ADVANTAGES**

- Alignment and leveling for horizontal and vertical axis.
- Ease of assembly and disassembly.
- Simple installation.
- Fast deliver and logistics.







## SETI LS-4060



### **DESCRIPTION:**

INDUSTRIAL ROOF Corrugated sheet landscape  
standard span between purlins 2.2 meter.

### **MATERIAL:**

profile Alloy 6063-T6 & Stainless-steel  
accessories A2-304.

### **FOR SEA SIDE:**

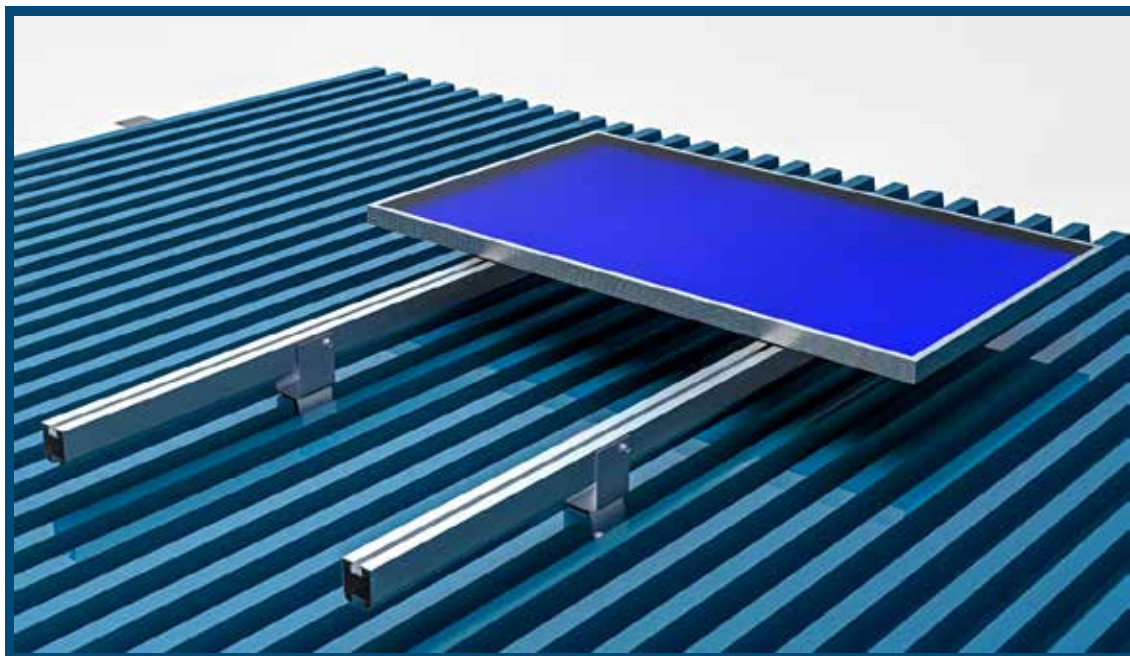
Anodized aluminum  
& stainless accessories A4-316.

### **ADVANTAGES**

- Maximum energy yield.
- High wind resistance.
- Simple installation.
- Useful for wide terrass span .



## SETI LS-LIGHT



### **DESCRIPTION:**

Industrial roof Corrugated sheet landscape  
maximum span for purlins 1.75 meter.

### **MATERIAL:**

profile Alloy 6063-T6 & Stainless-steel  
accessories A2-304.

### **FOR SEA SIDE:**

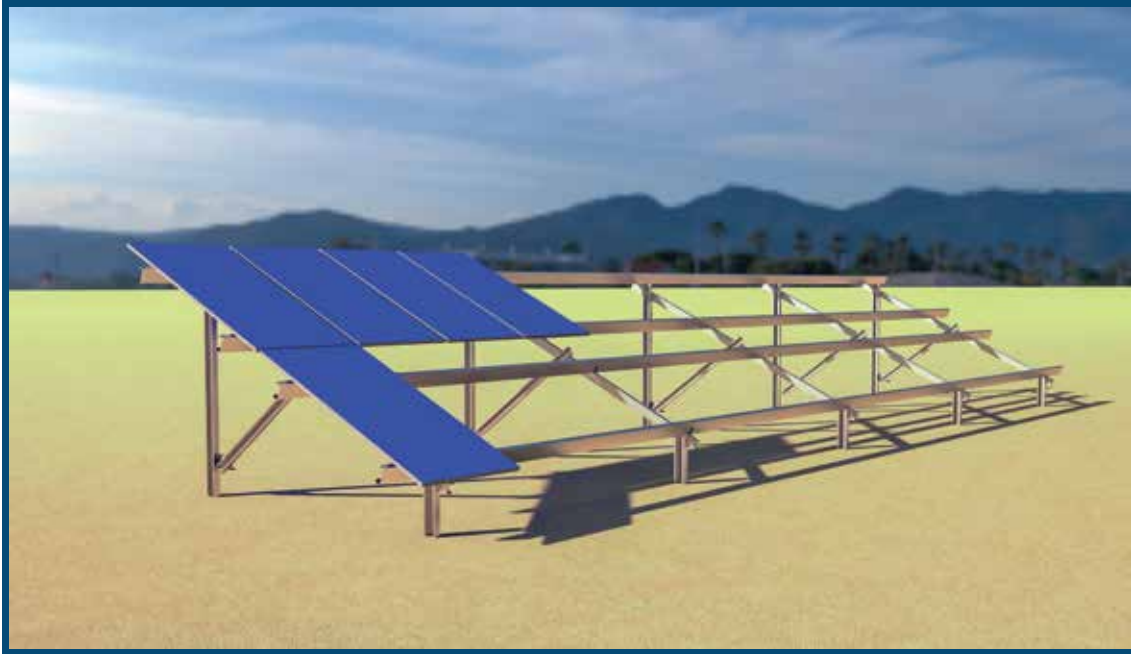
Anodized aluminum  
& stainless accessories A4-316.

### **ADVANTAGES**

- Maximum energy yield.
- High wind resistance.
- Simple installation.



## ANUBIS 2P STEEL RAMMING



### **DESCRIPTION:**

Dual Pile ramming steel structure for 2 portrait PV panels.

### **MATERIAL:**

- ZM 310 self healing pregalvanized or Hot deep galvanized steel
- Aluminum Clamps with Stainless-steel screws A2-304.



## SOPDU-CAR PORT



### **DESCRIPTION:**

Steel structure single or dual columns with aluminum rails for PV panels.

### **MATERIAL:**

Hot deep galvanized steel

/ Aluminum Profile Alloy

6063-T6 anodized or

Aluminum Profile Alloy 6082-T6.

Stainless-steel screws A2-304.



## **TILE ROOF - LOTUS**



### **DESCRIPTION:**

Roof tile mounting system.

### **MATERIAL:**

profile Alloy 6063-T6 & Stainless-steel  
accessories A2-304.

### **FOR SEA SIDE:**

Anodized aluminum  
& stainless accessories A4-316.

### **ADVANTAGES**

- Low cost.
- High wind resistance.
- Simple installation.
- Suitable for all kind of roof tile.

# LASTING QUALITY LIKE SUN



plot 202, third zone extension,  
Industrial Zone, 6th of October City.  
Tel.: +2 382 42034

[info@sunracks.net](mailto:info@sunracks.net)  
[www.sunracks.net](http://www.sunracks.net)